



Asymmetrical cross-over Cardigan

with set-in sleeves.

MEASUREMENTS

	S	M	L	XL	
	8-10	12-14	16-18	20-22	
Finished Measurement:	90	100	110	120	cm
Length (approx):	52	53	54	55	cm
Sleeve Length:	43	43	43	43	cm

MATERIALS

Cleckheaton Studio Mohair 8ply (50g balls)

Quantity **8** **9** **10** **10**

One **pair** of 4.00mm knitting needles and a 4.00mm **circular** knitting needle or THE REQUIRED SIZE TO GIVE CORRECT TENSION; 6 buttons; wool needle for sewing seams.

TENSION

This handknit has been designed at a tension of 22 sts and 29 rows to 10cm over stocking st, using 4.00mm needles.

ABBREVIATIONS

alt = alternate; **beg** = begin/ning; **cm** = centimetres; **cont** = continue; **dec** = decrease, decreasing; **foll** = follows, following; **inc** = increase, increasing; **incl** = inclusive, including; **K** = Knit; **'M1'** = make 1 - pick up loop which lies before next st, place on left hand needle and knit into back of loop; **P** = Purl; **patt** = pattern; **rem** = remain/ing; **rep** = repeat; **st/s** = stitch/es; **stocking st** = 1 row knit, 1 row purl; **tog** = together; **yfwd** = yarn forward - bring yarn under needle, then over into knitting position again, making a st

BACK

Using 4.00mm needles, cast on **101** (113-123-135) sts.

1st Row: K2, * P1, K1, rep from * to last st, K1.

2nd Row: K1, * P1, K1, rep from * to end.

Rep last 2 rows twice (6 rows rib in all).

Work 86 rows stocking st.

Shape Armholes:

Cast off **8** (12-15-18) sts at beg of next 2 rows ... **85** (89-93-99) sts.

Dec one st at each end of next and foll alt rows until **71** (75-79-85) sts rem.

Work **43** (47-49-53) rows (without further dec).

Shape Shoulders:

Cast off **6** (6-6-7) sts at beg of next 4 rows, then **5** (6-6-6) sts at beg of foll 2 rows.

Cast off rem **37** (39-43-45) sts.

LEFT FRONT

Using 4.00mm needles, cast on **69** (75-79-85) sts.

Work 6 rows rib as given for Back.

Shape Front Edge:

Working in stocking st for rem, dec one st at end of next row, then in 6th row until **54** (60-64-70) sts rem.

Purl 1 row.

Shape Armhole:

Cast off **8** (12-15-18) sts at beg of next row ... **46** (48-49-52) sts.

Dec one st at armhole edge in alt rows 4 times, *AT SAME TIME*

dec one st at neck edge in 4th row ... **41** (43-44-47) sts.

Dec one st at each end of foll alt rows 3 times ... **35** (37-38-41) sts.

This completes armhole shaping.

Tie a marker at end of last row to assist with knitting up band sts.

Cont Front Edge Shaping:

Cast off 2 sts at beg of next row.

Dec one st at end of next row.

Rep last 2 rows twice ... **26** (28-29-32) sts.

Dec one st at neck edge in every row until **24** (26-27-30) sts rem, then in alt rows until **21** (23-24-27) sts rem.

Dec one st at neck edge in 4th rows until **19** (20-19-21) sts rem,

then in 6th row/s until **17** (18-18-20) sts rem.

Work 9 rows (without further dec).

Shape Shoulder:

Cast off **6** (6-6-7) sts at beg of next and foll alt row.

Work 1 row.

Cast off rem **5** (6-6-6) sts.

RIGHT FRONT

Using 4.00mm needles, cast on **18** (24-28-34) sts.

Work 2 rows stocking st.

Beg Lower Curve:

Cast on 7 sts at beg of next row ... **25** (31-35-41) sts.

Purl 1 row.

Cast on 5 sts at beg of next row.

Purl 1 row.

Rep last 2 rows once ... **35** (41-45-51) sts.

Cast on 3 sts at beg of next row.

Purl 1 row.

Rep last 2 rows 14 times ... **80** (86-90-96) sts.

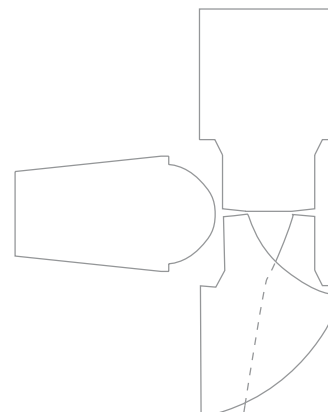
Cast on 2 sts at beg of next row.

Purl 1 row.

Rep last 2 rows 7 times ... **96** (102-106-112) sts.

Work 24 rows.

Tie a marker at end of last row to indicate beg of right front upper curve.



Beg Upper Curve:

1st Row: Cast off 11 sts, knit to end ... **85** (91-95-101) sts.

2nd Row: Purl to last 2 sts, P2tog.

3rd Row: Cast off 3 sts, knit to end.

Rep last 2 rows twice, then 2nd row once ... **72** (78-82-88) sts.

9th Row: Cast off 2 sts, knit to end ... **70** (76-80-86) sts.

Shape Armhole:

Next Row: Cast off **8** (12-15-18) sts, purl to last 2 sts, P2tog ... **61** (63-64-67) sts.

Next Row: Cast off 2 sts, knit to last 2 sts, K2tog.

Next Row: Purl to last 2 sts, P2tog.

Rep last 2 rows 6 times ... **33** (35-36-39) sts.

This completes armhole shaping.

Cont Upper Curve Shaping:

Next Row: Cast off 2 sts, knit to end.

Next Row: Purl to last 2 sts, P2tog.

Rep last 2 rows once ... **27** (29-30-33) sts.

Dec one st at neck edge in every row until **24** (26-27-30) sts rem, then in alt rows until **21** (23-24-27) sts rem.

Dec one st at neck edge in 4th rows until **19** (20-19-21) sts rem, then in 6th row/s until **17** (18-18-20) sts rem.

Work 10 rows (without further dec).

Shape Shoulder:

Work as given for Left Front shoulder shaping.

SLEEVES

Using 4.00mm needles, cast on **49** (51-51-53) sts.

Work 6 rows rib as given for Back.

Work 4 rows stocking st.

Next Row: K2, 'M1', knit to last 2 sts, 'M1', K2 ... **51** (53-53-55) sts.

Inc one st at each end (as in previous row) in

6th (6th-4th-4th) rows until there are **59** (83-77-97) sts, then in

8th (8th-6th-6th) row/s until there are

77 (85-93-101) sts.

Cont (without further inc) until sleeve measures 43cm from beg, ending with a purl row.

Shape Top:

Cast off **4** (6-7-9) sts at beg of next 2 rows ... **69** (73-79-83) sts.

Dec one st at each end of next and alt rows until **45** (45-53-57) sts rem, then in every row until 15 sts rem.

Cast off.

LOWER RIGHT FRONT CURVED BAND

With right side facing and using 4.00mm needles, knit up

109 (115-119-125) sts evenly along curved lower edge of Right Front.

Work 2 rows rib as given for Back, beg with a 2nd row.

Next Row (buttonhole): Rib to last 39 sts, yfwd, K2tog, rib to end.

Work 2 rows rib.

Cast off loosely in rib.

UPPER BAND AND LEFT FRONT BAND (worked in one piece)

NOTE: We recommend using 'Mattress St' to sew up your handknit (see website for diagram).

Join shoulder seams.

With right side facing, using 4.00mm **circular** needle and beg at marker on upper right front, knit up

101 (105-107-111) sts evenly along upper right front edge to

shoulder seam, knit up **37** (39-43-45) sts evenly across back neck

to other shoulder seam, knit up **41** (45-47-51) sts evenly along left

front neck edge from shoulder to marker, then knit up 94 sts evenly

along left front edge to lower edge ... **273** (283-291-301) sts.

Work 2 rows rib as given for Back, beg with a 2nd row.

Next Row (buttonholes): Rib to last 50 sts, (yfwd, rib 2tog, rib 16) twice, yfwd, rib 2tog, rib to end.

Work 2 rows rib

Cast off loosely in rib.

LEFT SIDE BAND ON RIGHT FRONT

With right side facing and using 4.00mm needles, knit up 31 sts evenly along straight edge between end of lower curve and beg of upper curve, incl ends of rib rows.


Work 2 rows rib as given for Back, beg with a 2nd row.

Next Row (buttonholes): Rib 5, yfwd, rib 2tog, rib to last 6 sts, yfwd, rib 2tog, rib 4.

Work 2 rows rib.

Cast off loosely in rib.

TO MAKE UP

Join side and sleeve seams. Placing centre of sleeve to shoulder seam, sew in sleeves evenly. Sew on buttons. 

CLICK
CLACK



hotline

For Australian residents -

If you need help with your pattern, please phone

03 9380 3888 or Toll Free 1800 337 032 (9am to 5pm Mon - Fri E.S.T.).

Please Quote pattern No. Z266.

www.cleckheaton.biz

A DIVISION OF

AUSTRALIAN COUNTRY SPINNERS PTY. LTD.

314 - 320 ALBERT STREET, BRUNSWICK, VIC. 3056

TELEPHONE: (03) 9380 3888 A.B.N. 85 055 366 590