

# Cleckheaton FREE PATTERN



## Throw Rug knitted in panels

### MEASUREMENTS

Width: 120 cm

Length: 150 cm

### MATERIALS

Cleckheaton Studio Mohair 8ply (50g balls)

Quantity 11

One pair of 5.00mm knitting needles or THE REQUIRED SIZE TO GIVE CORRECT TENSION; wool needle for sewing seams.

### TENSION

This handknit has been designed at a tension of 17 sts and 23 rows to 10cm over stocking st, using 5.00mm needles.



### ABBREVIATIONS

**alt** = alternate; **beg** = begin/ning; **cm** = centimetres; **cont** = continue; **dec** = decrease, decreasing;  **foll** = follows, following; **incl** = inclusive, including; **K** = knit; **P** = purl; purl fabric = (reverse of stocking st) = purl right side rows, knit wrong side rows; **patt** = pattern; **psso** = pass slipped st over; **rem** = remain/ing; **rep** = repeat; **sl** = slip; **st/s** = stitch/es; **stocking st** = knit right side rows, purl wrong side rows; **tbl** = through back of loop; **tog** = together; **yfwd** = yarn forward - bring yarn under needle then over into knitting position again, making a st.

### Throw

#### Lace Panel A (make 1)

Using 5.00mm needles, cast on 38 sts.

**Foundation row** (wrong side): Purl.

**1st Row:** K1, \* K4, (yfwd, sl 1, K1, psso) 3 times, rep from \* to last 7 sts, K7.

**2nd and foll alt rows:** Purl.

**3rd Row:** K2, \* K2, (yfwd, sl 1, K1, psso) 4 times, rep from \* to last 6 sts, K6.

**5th Row:** As 1st row.

**7th Row:** K1, \* K2tog, yfwd, K3, (yfwd, sl 1, K1, psso) twice, K1, rep from \* to last 7 sts, K2tog, yfwd, K5.

**9th Row:** K2, K2tog, yfwd, \* K3, yfwd, sl 1, K1, psso, K1, (K2tog, yfwd) twice, rep from \* to last 4 sts, K4.

**11th Row:** K1, (K2tog, yfwd) twice, K4, \* (K2tog, yfwd) 3 times, K4 rep from \* to last 9 sts, (K2tog, yfwd) twice, K5.

**13th Row:** K2, (K2tog, yfwd) twice, K2, \* (K2tog, yfwd) 4 times, K2, rep from \* to last 10 sts, (K2tog, yfwd) 3 times, K4.

**15th Row:** As row 11.

**17th Row:** As row 9.

**19th Row:** As row 7.

**20th Row:** Purl.

Last 20 rows form patt for Panel A.

Rep last 20 rows until work measures 150cm from beg, working last row on wrong side.

Cast off.

#### Lace Panel C (make 1)

Using 5.00mm needles, cast on 36 sts.

**Foundation row** (wrong side): Purl.

**1st Row:** K1, \* K4, (yfwd, sl 1, K1, psso) 3 times, rep from \* to last 5 sts, K5.

**2nd and foll alt rows:** Purl.

**3rd Row:** K2, \* K2, (yfwd, sl 1, K1, psso) 4 times, rep from \* to last 4 sts, K4.

**5th Row:** As 1st row.

**7th Row:** K1, \* K2tog, yfwd, K3, (yfwd, sl 1, K1, psso) twice, K1, rep from \* to last 5 sts, K2tog, yfwd, K3.

**9th Row:** K2, K2tog, yfwd, \* K3, yfwd, sl 1, K1, psso, K1, (K2tog, yfwd) twice, rep from \* to last 2 sts, K2.

**11th Row:** K1, (K2tog, yfwd) twice, K4, \* (K2tog, yfwd) 3 times, K4, rep from \* to last 7 sts, (K2tog, yfwd) twice, K3.

**13th Row:** K2, (K2tog, yfwd) twice, K2, \* (K2tog, yfwd) 4 times, K2, rep from \* to last 8 sts, (K2tog, yfwd) 3 times, K2.

**15th Row:** As row 11.

**17th Row:** As row 9.

**19th Row:** As row 7.

**20th Row:** Purl.

Last 20 rows form patt for Panel C.

Rep last 20 rows until work measures 150cm from beg, working last row on wrong side.

Cast off.

continued →

We have made every effort to ensure that these instructions are accurate and complete.

We cannot, however, be responsible for variations in individuals work, or if yarn other than the recommended Cleckheaton yarn is used.

Copyright © Cleckheaton, 2005 all rights reserved.

This free pattern is only for personal non-commercial use. Reproduction for commercial gain in any form including photocopying will lead to proceedings being brought by Australian Country Spinners.



**Lace Panel E (make 1)**

Using 5.00mm needles, cast on 38 sts.

**Foundation row (wrong side):** Purl.

**1st Row:** K3, \* K4, (yfwd, sl 1, K1, pssso) 3 times, rep from \* to last 5 sts, K5.

**2nd and foll alt rows:** Purl.

**3rd Row:** K4, \* K2, (yfwd, sl 1, K1, pssso) 4 times, rep from \* to last 4 sts, K4.

**5th Row:** As 1st row.

**7th Row:** K3, \* K2tog, yfwd, K3, (yfwd, sl 1, K1, pssso) twice, K1, rep from \* to last 5 sts, K2tog, yfwd, K3.

**9th Row:** K4, K2tog, yfwd, \* K3, yfwd, sl 1, K1, pssso, K1, (K2tog, yfwd) twice, rep from \* to last 2 sts, K2.

**11th Row:** K3, (K2tog, yfwd) twice, K4, \* (K2tog, yfwd) 3 times, K4, rep from \* to last 7 sts, (K2tog, yfwd) twice, K3.

**13th Row:** K4, (K2tog, yfwd) twice, K2, \* (K2tog, yfwd) 4 times, K2, rep from \* to last 8 sts, (K2tog, yfwd) 3 times, K2.

**15th Row:** As row 11.

**17th Row:** As row 9.

**19th Row:** As row 7.

**20th Row:** Purl.

Last 20 rows form patt for Panel E.

Rep last 20 rows until work measures 150cm from beg, working last row on wrong side.

Cast off.

**Stocking St Panel B and D (make 2)**

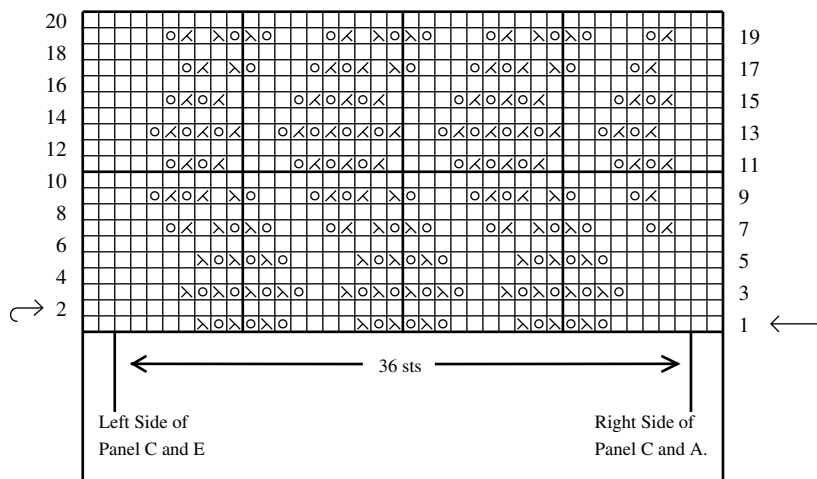
Using 5.00mm needles, cast on 45 sts.

Work in stocking st until work measures 150cm from beg, ending with a purl row.

Cast off.

**TO MAKE UP**

Join pieces as shown in diagram. Using 5.00mm needles, knit up number of sts required to keep work flat, evenly along lower edge of rug - from corner to corner. Work three rows purl fabric, beg with a knit row. Cast off loosely. Work top of rug (cast off edges) in same manner. 🧵



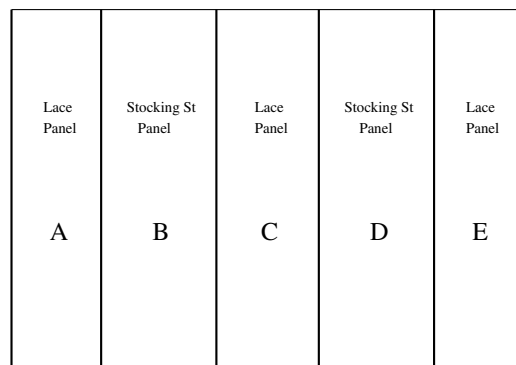
Left Side edge of Panel A - incl edging.

Right Side edge of Panel E - incl edging.

**KEY**

- = Knit st on odd numbered rows (right side), purl st on even numbered rows (wrong side).
- ⊠ = Yfwd (to make a st).
- ⊞ = K2tog.
- ⊞ = Sl 1, K1, pssso.

**Note:** When working from Graph, read odd numbered rows (right side rows) from right to left and even numbered rows (wrong side rows) from left to right.



**If you need help with your pattern, please phone Australia 613 9380 3888 or Toll Free 1800 337 032 and quote Z201**

for more free patterns go to:  
**www.cleckheaton.biz**

(A DIVISION OF AUSTRALIAN COUNTRY SPINNERS PTY. LTD)  
314 - 320 ALBERT STREET, BRUNSWICK, VIC. 3056, AUSTRALIA



We have made every effort to ensure that these instructions are accurate and complete.

We cannot, however, be responsible for variations in individuals work, or if yarn other than the recommended Cleckheaton yarn is used.

Copyright © Cleckheaton, 2005 all rights reserved.  
This free pattern is only for personal non-commercial use. Reproduction for commercial gain in any form including photocopying will lead to proceedings being brought by Australian Country Spinners.